

By CIP category, degree type, IHE type, and IHE

		Completions				
		2017	2018	2019	2020	2021
<b>2-Year Public</b>		<b>2160</b>	<b>2586</b>	<b>2356</b>	<b>2098</b>	<b>2118</b>
<b>Aims Community College</b>		<b>275</b>	<b>254</b>	<b>231</b>	<b>164</b>	<b>143</b>
	513801	19	21	23	21	28
	02 - Certificate(at least one but less than two years)	3		4	2	3
	11 - Associate of Applied Science	19	21	23	21	27
	513902	256	233	208	143	115
	01 - Certificate(less than one year)	256	233	208	143	115
<b>Arapahoe Community College</b>		<b>214</b>	<b>324</b>	<b>325</b>	<b>241</b>	<b>166</b>
	513801	68	68	68	63	50
	02 - Certificate(at least one but less than two years)	11	12	3	9	3
	11 - Associate of Applied Science	61	66	68	60	37
	21 - Bachelor's Degree					12
	513902	146	256	257	178	116
	01 - Certificate(less than one year)	146	256	257	178	116
<b>Colorado Northwestern Community College</b>		<b>64</b>	<b>65</b>	<b>55</b>	<b>46</b>	<b>41</b>
	513801	25	23	24	21	17
	02 - Certificate(at least one but less than two years)		6	8	4	2
	11 - Associate of Applied Science	25	23	24	20	17
	513902	39	42	31	25	24
	01 - Certificate(less than one year)	39	42	31	25	24
<b>Community College of Aurora</b>		<b>17</b>	<b>29</b>	<b>41</b>	<b>46</b>	<b>53</b>
	513902	17	29	41	46	53
	01 - Certificate(less than one year)	17	29	41	46	53
<b>Community College of Denver</b>		<b>167</b>	<b>235</b>	<b>192</b>	<b>115</b>	<b>129</b>
	513901					20
	02 - Certificate(at least one but less than two years)					20
	513902	167	235	192	115	109
	01 - Certificate(less than one year)	167	235	192	115	109
<b>Front Range Community College</b>		<b>421</b>	<b>459</b>	<b>427</b>	<b>403</b>	<b>343</b>
	513801	146	147	166	150	116
	02 - Certificate(at least one but less than two years)	16	9	14	4	4

	11 - Associate of Applied Science	138	144	162	148	112
	21 - Bachelor's Degree					4
	513901	1		7	17	15
	02 - Certificate(at least one but less than two years)	1		7	17	15
	513902	274	312	254	236	212
	01 - Certificate(less than one year)	274	312	254	236	212
<b>Lamar Community College</b>		<b>48</b>	<b>64</b>	<b>50</b>	<b>28</b>	<b>32</b>
	513801	28	37	30	14	19
	02 - Certificate(at least one but less than two years)	25	31	19	9	15
	11 - Associate of Applied Science	23	27	23	14	15
	513902	20	27	20	14	13
	01 - Certificate(less than one year)	20	27	20	14	13
<b>Morgan Community College</b>		<b>112</b>	<b>107</b>	<b>71</b>	<b>67</b>	<b>72</b>
	513801	32	31	32	26	36
	11 - Associate of Applied Science	32	31	32	26	26
	21 - Bachelor's Degree					10
	513901	17	18	17	15	18
	02 - Certificate(at least one but less than two years)	17	18	17	15	18
	513902	75	70	35	34	32
	01 - Certificate(less than one year)	75	70	35	34	32
<b>Northeastern Junior College</b>		<b>23</b>	<b>26</b>	<b>22</b>	<b>22</b>	<b>22</b>
	513801	23	26	22	22	22
	02 - Certificate(at least one but less than two years)	9	6	11	16	
	11 - Associate of Applied Science	20	24	22	18	22
<b>Otero College</b>		<b>100</b>	<b>93</b>	<b>78</b>	<b>92</b>	<b>126</b>
	513801	39	24	37	63	74
	11 - Associate of Applied Science	39	24	37	63	74
	513901	16	26	2	40	37
	02 - Certificate(at least one but less than two years)	16	26	2	40	37
	513902	45	43	39	27	47
	01 - Certificate(less than one year)	45	43	39	27	47
<b>Pikes Peak Community College</b>		<b>311</b>	<b>410</b>	<b>341</b>	<b>397</b>	<b>482</b>
	513801	311	410	341	397	482
	01 - Certificate(less than one year)	234	327	263	308	382

	11 - Associate of Applied Science	78	84	79	89	94
	21 - Bachelor's Degree					9
<b>Pueblo Community College</b>		<b>149</b>	<b>267</b>	<b>263</b>	<b>227</b>	<b>308</b>
	513801	87	105	126	136	163
	02 - Certificate(at least one but less than two years)	32	35	44	22	29
	11 - Associate of Applied Science	78	93	111	132	145
	21 - Bachelor's Degree					9
	513901		9	13	13	
	02 - Certificate(at least one but less than two years)		9	13	13	
	513902	62	153	125	78	145
	01 - Certificate(less than one year)	62	153	125	78	145
<b>Red Rocks Community College</b>		<b>147</b>	<b>134</b>	<b>149</b>	<b>144</b>	<b>111</b>
	513902	147	134	149	144	111
	01 - Certificate(less than one year)	147	134	149	144	111
<b>Trinidad State College</b>		<b>114</b>	<b>120</b>	<b>112</b>	<b>108</b>	<b>90</b>
	513801	36	40	43	43	45
	02 - Certificate(at least one but less than two years)	26	22	24	21	22
	11 - Associate of Applied Science	23	34	36	41	37
	513902	78	80	69	65	45
	01 - Certificate(less than one year)	78	80	69	65	45
<b>4-Year Private Non-Profit</b>		<b>461</b>	<b>449</b>	<b>376</b>	<b>336</b>	<b>366</b>
<b>Colorado Christian University</b>		<b>82</b>	<b>116</b>	<b>66</b>	<b>65</b>	<b>92</b>
	513801	82	116	66	65	92
	21 - Bachelor's Degree	82	116	66	65	92
<b>Regis University</b>		<b>379</b>	<b>333</b>	<b>310</b>	<b>271</b>	<b>274</b>
	513801	379	333	310	271	274
	21 - Bachelor's Degree	379	333	310	271	274
<b>4-Year Public</b>		<b>1454</b>	<b>1433</b>	<b>1513</b>	<b>1537</b>	<b>1570</b>
<b>Adams State University</b>		<b>28</b>	<b>22</b>	<b>24</b>	<b>12</b>	<b>14</b>
	513801	28	22	24	12	14
	21 - Bachelor's Degree	28	22	24	12	14
<b>Colorado Mesa University</b>		<b>278</b>	<b>317</b>	<b>304</b>	<b>265</b>	<b>279</b>
	513801	170	203	188	194	186
	11 - Associate of Applied Science	55			15	

	21 - Bachelor's Degree	106	194	181	175	186
	31 - Master's Degree	9	9	7	4	
	513901	29	32	36	35	36
	02 - Certificate(at least one but less than two years)	29	32	36	35	36
	513902	79	82	80	36	57
	01 - Certificate(less than one year)	79	82	80	36	57
<b>Colorado Mountain College</b>		<b>178</b>	<b>142</b>	<b>161</b>	<b>141</b>	<b>195</b>
	513801	54	63	52	59	76
	02 - Certificate(at least one but less than two years)	16	14			
	11 - Associate of Applied Science	36	34	34	36	50
	21 - Bachelor's Degree	17	28	18	23	26
	513902	124	79	109	82	119
	01 - Certificate(less than one year)	124	79	109	82	119
<b>Colorado State University - Pueblo</b>		<b>128</b>	<b>118</b>	<b>133</b>	<b>152</b>	<b>170</b>
	513801	128	118	133	152	170
	05 - Post-Masters Certificate					4
	21 - Bachelor's Degree	97	83	92	111	135
	31 - Master's Degree	31	35	41	41	31
<b>Metropolitan State University of Denver</b>		<b>127</b>	<b>133</b>	<b>129</b>	<b>114</b>	<b>118</b>
	513801	127	133	129	114	118
	21 - Bachelor's Degree	127	133	129	114	118
<b>University of Colorado Colorado Springs</b>		<b>262</b>	<b>238</b>	<b>247</b>	<b>273</b>	<b>251</b>
	513801	262	238	247	273	251
	05 - Post-Masters Certificate	5	7	6	1	5
	21 - Bachelor's Degree	200	193	202	196	175
	31 - Master's Degree	47	34	37	70	62
	53 - Doctoral - professional practice	10	4	2	6	9
<b>University of Colorado Denver</b>		<b>307</b>	<b>290</b>	<b>332</b>	<b>320</b>	<b>313</b>
	513801	307	290	332	320	313
	21 - Bachelor's Degree	291	265	313	300	274
	53 - Doctoral - professional practice	16	25	19	20	39
<b>University of Northern Colorado</b>		<b>146</b>	<b>173</b>	<b>183</b>	<b>260</b>	<b>230</b>
	513801	146	173	183	260	230
	21 - Bachelor's Degree	146	173	183	193	208

31 - Master's Degree		67	22			
<b>Other</b>		<b>694</b>	<b>487</b>	<b>442</b>	<b>319</b>	<b>234</b>
<b>Emily Griffith Technical College</b>		<b>391</b>	<b>268</b>	<b>258</b>	<b>156</b>	<b>117</b>
	513901	68	55	40	28	38
	02 - Certificate(at least one but less than two years)	68	55	40	28	38
	513902	323	213	218	128	79
	01 - Certificate(less than one year)	323	213	218	128	79
<b>Pickens Technical College</b>		<b>132</b>	<b>83</b>	<b>61</b>	<b>75</b>	<b>43</b>
	513901	17	34	39	55	43
	01 - Certificate(less than one year)	17	34	39	55	43
	513902	115	49	22	20	
	01 - Certificate(less than one year)	115	49	22	20	
<b>Technical College of the Rockies</b>		<b>171</b>	<b>136</b>	<b>123</b>	<b>88</b>	<b>74</b>
	513901	29		34	35	22
	01 - Certificate(less than one year)	29		34	35	22
	513902	142	136	89	53	52
	01 - Certificate(less than one year)	142	136	89	53	52
<b>Totals</b>		<b>4769</b>	<b>4955</b>	<b>5687</b>	<b>4290</b>	<b>4288</b>

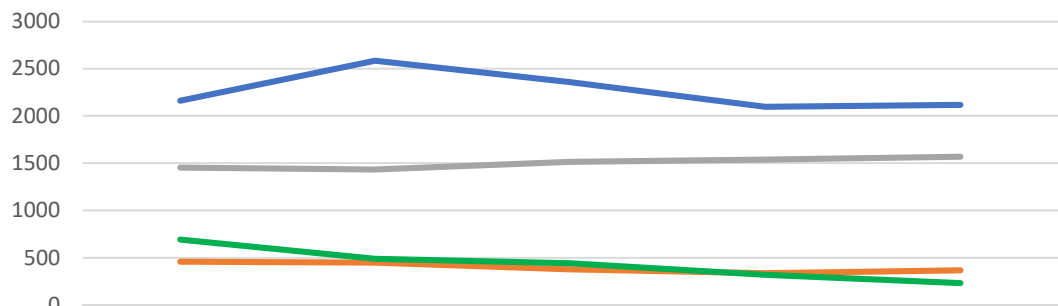
By CIP category and degree type

Row Labels	Enrollment					Completions				
	2017	2018	2019	2020	2021	2017	2018	2019	2020	2021
<b>513801- Nursing</b>	<b>113</b>	<b>100</b>	<b>142</b>	<b>124</b>	<b>77</b>	<b>2484</b>	<b>2606</b>	<b>2536</b>	<b>2636</b>	<b>2739</b>
01 - Certificate(less than one year)	2	2	1	1		234	327	263	308	382
02 - Certificate(at least one but less than two years)	3	2	2	2		138	135	127	87	78
05 - Post-Masters Certificate						5	7	6	1	9
11 - Associate of Applied Science	12	7	9	9	12	627	605	651	683	656
12 - Associate of General Studies	29	18	37	28	35					
13 - Associate Degree(AA or AS)	25	25	15	22	15					
21 - Bachelor's Degree	32	39	73	58	12	1473	1540	1518	1460	1546
31 - Master's Degree					3	87	78	85	182	115
53 - Doctoral - professional practice	10	7	5	4		26	29	21	26	48
<b>513901- Practical Nursing</b>	<b>90</b>	<b>92</b>	<b>111</b>	<b>84</b>	<b>57</b>	<b>177</b>	<b>174</b>	<b>188</b>	<b>238</b>	<b>229</b>
01 - Certificate(less than one year)						46	34	73	90	65
02 - Certificate(at least one but less than two years)						131	140	115	148	164
11 - Associate of Applied Science	49	39	56	31	12					
12 - Associate of General Studies	2		1	1	1					
13 - Associate Degree(AA or AS)	8	7	2	1	3					
21 - Bachelor's Degree	31	46	52	51	41					
<b>513902- Nurse Aid</b>	<b>510</b>	<b>543</b>	<b>606</b>	<b>518</b>	<b>427</b>	<b>2109</b>	<b>2173</b>	<b>1937</b>	<b>1424</b>	<b>1329</b>
01 - Certificate(less than one year)	10	9	12	11	14	2109	2173	1937	1424	1329
02 - Certificate(at least one but less than two years)	7	8	6	8	19					
11 - Associate of Applied Science	203	211	223	164	118					
12 - Associate of General Studies	81	101	136	120	107					
13 - Associate Degree(AA or AS)	133	132	142	118	90					
21 - Bachelor's Degree	75	81	86	96	78					
53 - Doctoral - professional practice	1	1	1	1	1					
<b>Totals</b>	<b>713</b>	<b>735</b>	<b>859</b>	<b>726</b>	<b>561</b>	<b>4770</b>	<b>4953</b>	<b>4661</b>	<b>4298</b>	<b>4297</b>

## Completions

	2017	2018	2019	2020	2021
<b>2-Year Public</b>	<b>2160</b>	<b>2586</b>	<b>2356</b>	<b>2098</b>	<b>2118</b>
<b>4-Year Private Non-Profit</b>	<b>461</b>	<b>449</b>	<b>376</b>	<b>336</b>	<b>366</b>
<b>4-Year Public</b>	<b>1454</b>	<b>1433</b>	<b>1513</b>	<b>1537</b>	<b>1570</b>
<b>Other (ATC)</b>	<b>694</b>	<b>487</b>	<b>442</b>	<b>319</b>	<b>234</b>
<b>All</b>	<b>4769</b>	<b>4955</b>	<b>4687</b>	<b>4290</b>	<b>4288</b>

### Nursing Completions (5 year trends)



	2017	2018	2019	2020	2021
2-Year Public	2160	2586	2356	2098	2118
4-Year Private Non-Profit	461	449	376	336	366
4-Year Public	1454	1433	1513	1537	1570
Other (ATC)	694	487	442	319	234
All					

Year

— 2-Year Public   
 — 4-Year Private Non-Profit   
 — 4-Year Public   
 — Other (ATC)   
 — All

